



Soundproofing

Acoustic Insulating Compound.

PRESENTATION

PKB-2 insulation is made up of bituminous and textile fiber based porous materials.

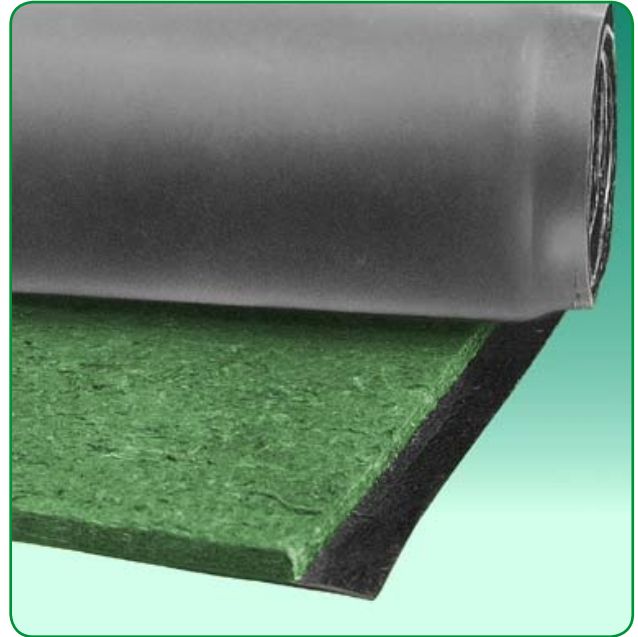
ADVANTAGES

It is a flexible and heavy material which adapts to all surfaces easily. The combination of multiple layers of PKB-2 ensures the creation of absorbent bases and floating floors which eliminate vibration. It is the optimal covering for insulating ventilation ducts, fluid pipes and downpipes against noise transmitted to outside.

Excellent insulation may be achieved in multi-layer partition wall systems or civil works for both walls and ceilings by correctly combining PKB-2 with several other materials.

APPLICATIONS

Floors, walls and ceilings.



TECHNICAL DATA

Insulating material: Polymer based bitumen.

Absorbent material: 88 kg/m³.

Thermal conductivity: 0.043 Kcal/(m*h*°C).

Dimensions: 5,000 x 1,000mm rolls.

Thickness: 18 mm.

Weight: 5 kg/m².

Fire resistance: B s1 d0 in AI-TD23 partition walls (with PKB-2 in an air chamber) in accordance with AITEX registry Nr. 08AN0312.

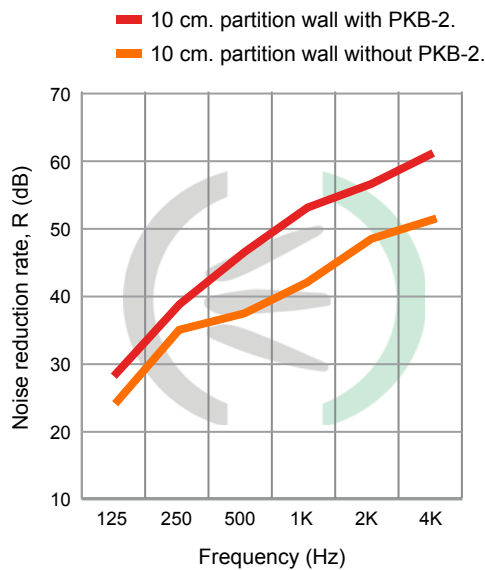
PICTURES



Partition wall insulation with PKB-2.



Ceiling insulation with PKB-2



f (Hz)	R (dB)	R (dB)
125	24	28
250	36	39
500	38	47
1K	42	53
2K	49	57
4K	51	61

10cm partition wall	Without PKB-2	With PKB-2
Overall noise reduction rate, R _w (C;Ctr):	42 (-2;-6) dB	49 (-2;-8) dB
Overall weighted noise reduction rate A, R _A :	41,5 dBA	47,5 dBA

ASSEMBLY INSTRUCTIONS



Floating floors

The AI-SL-06 type floating floor comprises a layer of **PKB-2** insulation. The layer of **PKB-2** overlaps the entire floor perimeter. A layer of plastic is placed over the material as a sealant. A suitable piece of mesh is then laid down to share the load, which may be a 2.5mm diameter rod and a 15cm x 15cm grid and finishing with a 10cm to 20cm concrete slab, depending on the case.

Walls and Ceilings

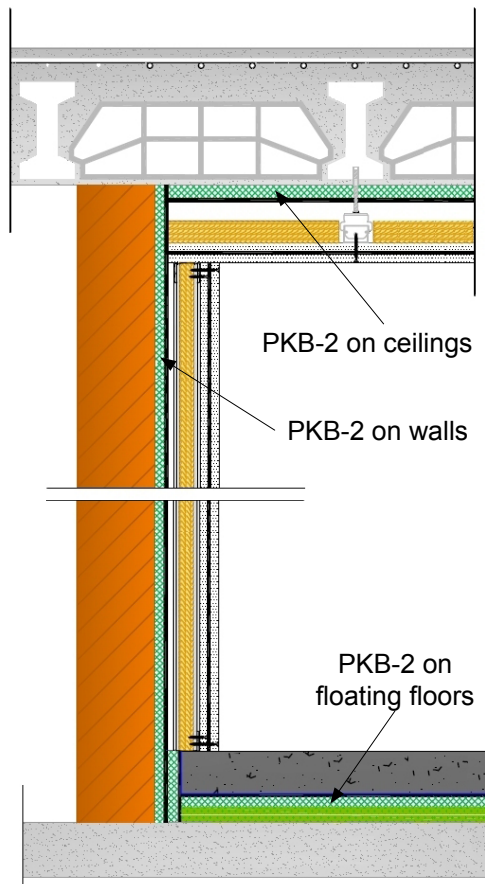
Apply 1 or 2 layers of **PKB-2** to the surface to be insulated with a continuous coating thanks to its crafty and easy adaptability. Spread 300 g/m² of impact glue using a short-fiber roller and the same amount on the porous part (green) of the **PKB-2** material. Leave it to dry for a few minutes and place the **PKB-2** against the substrate, which should be porous. If it is not, increases in the ambient temperature and the effect of the evaporation of the glue will cause it to come unstuck. If the substrate is made of metal a hardener should be used with the glue.

Air the location to ensure the solvents evaporate and the material dries correctly.

The space between the **PKB-2** and the finishing material is covered with **Acustifiber F40**. In the case of double walls, both construction material and plasterboard may be used to obtain different insulation levels.



SKETCHES AND PLANS



Acustica Integral offers a wide range of acoustic solutions made from different materials for floors, walls and ceilings. They provide varying levels of acoustic insulation in accordance with needs.

The example attached is composed of:

- Floating floor: **AI-SL**.
- Acoustic partition wall : **AI-TD**.
- Acoustic ceiling: **AI-TC**.

